

RYCERSKA *residence*

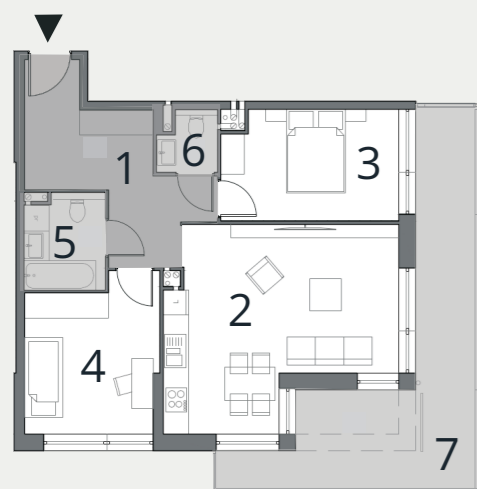
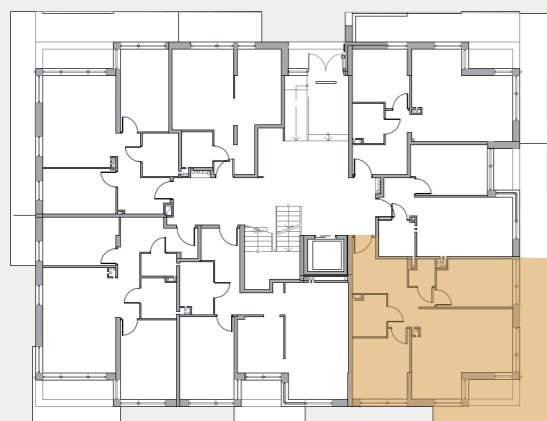
BUDYNEK C

APARTAMENT NR

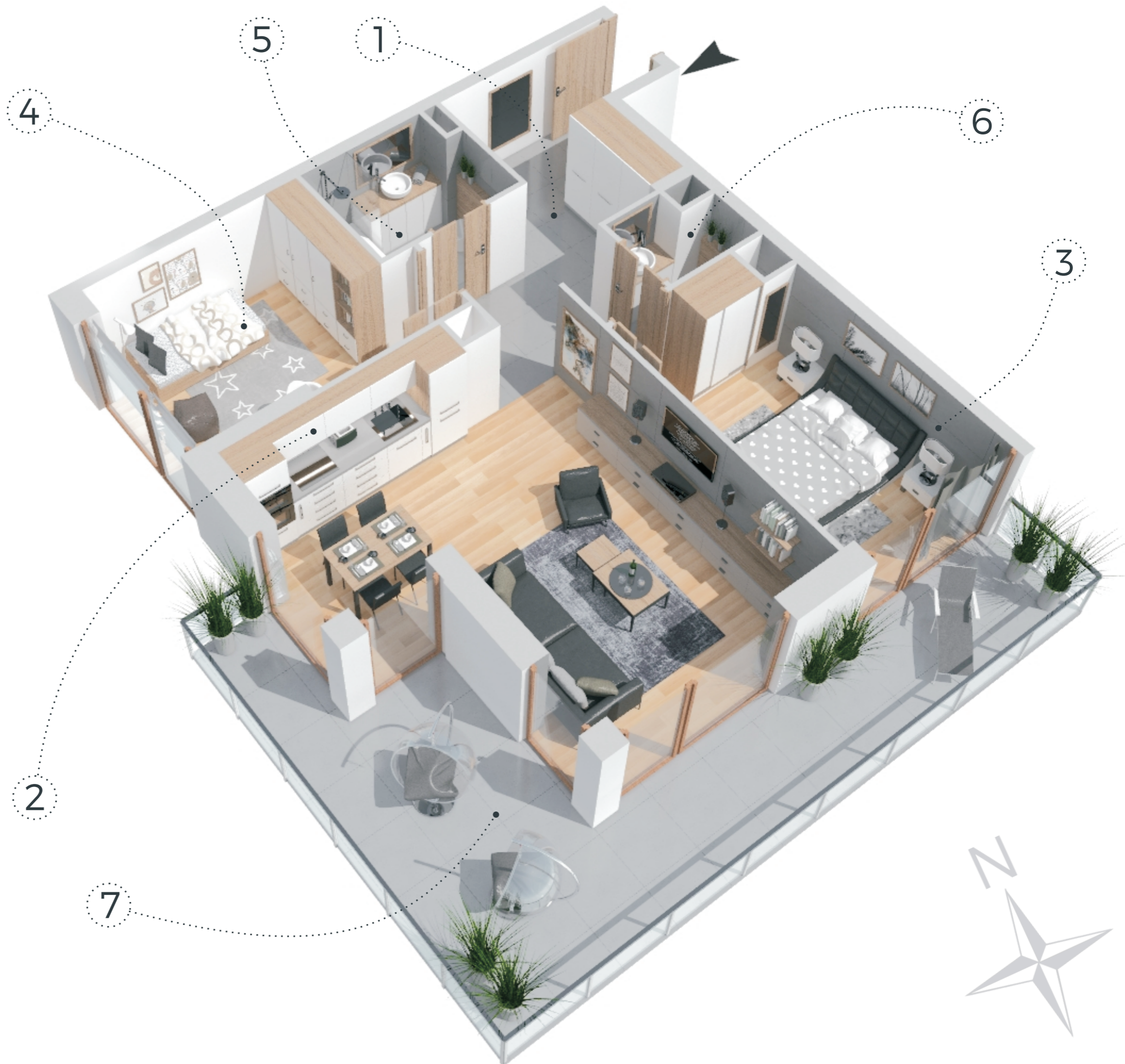
62,19m²

PARTER

7



1 hol	11,15 m ²
2 salon+kuchnia	23,25 m ²
3 pokój	10,73 m ²
4 pokój	11,09 m ²
5 łazienka	4,15 m ²
6 wc	1,82 m ²
7 taras	20,97 m ²



GRODZKI
DEVELOPMENT

BIURO SPRZEDAŻY: Łomża, ul. Zawadzka 50/3, tel.: 733 88 44 33, e-mail: biuro@rycerskaresidence.eu